

PassStore™ User Guide

For Software Version 1.2



Copyright © 2002-2004 by Clarisource, Inc.
All rights reserved.

Table of Contents

Overview.....	3
Navigation.....	3
Splash Screen.....	4
Setup Form.....	4
Menu List.....	5
Account List.....	5
Add Account Form.....	6
Edit Account Form.....	6
Show Account From.....	6
Troubleshooting.....	6
Technical Support.....	8
Feedback.....	8

Legal Statements

Purchasers of the product are licensed to use the product on one device (cell phone, PDA or other similar mobile device). Purchasers are not entitled to free upgrades, however Clarisource, at it's disccression may offer discounts on product upgrades.

Clarisource has designed this product to perform the basic functions as described in this manual, but assumes no responsibility or liabilty for data loss, lost passwords or security breaches. The sole remedy for any claim will be the return of product purchase price to the consumer from the retailer.

Screen snapshots, when provided in this document, are for illustrative purposes only. Screens will vary depending on the model and brand of your phone.

Java and J2ME are registered trademarks of Sun Microsystems, Inc.

Overview

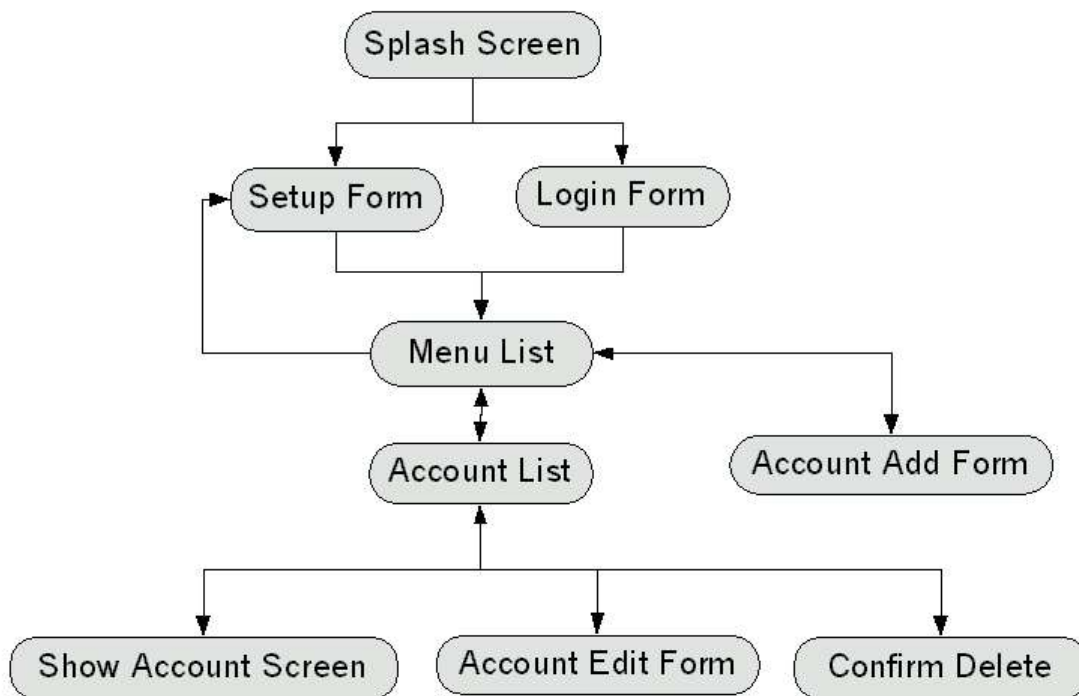
PassStore™ is a J2ME application that allows you to store and retrieve account information. The account information is protected by a master password. This allows the you to retrieve your account information while only needing to remember a single password. Since the information is stored in a mobile device (cell phone, PDA, etc.), it will always be with you.

Your account information is stored only on your mobile device. It is never transmitted from your device.

The information stored on the phone is not encrypted. The information could be accessed by someone with physical possession to your phone, technical knowledge and special software (generally, available only to phone service technicians) and hardware.

Navigation

The figure below shows the basic screen navigation for the PassStore application. The following sections describe each screen in detail.



Splash Screen

After launching the application, the splash screen will display. The splash screen shows your software version as well as manufacturer and copyright information.

If this is a new installation and you have not setup your master password, the setup screen will display after the splash screen.

If you have already setup the application then the main menu will display.

Setup Form

The setup form allows you to choose or change your master password. The master password is used to protect the account information stored in your phone. The master password must be 4 to 32 characters long.

After reading the message, you must scroll down to fill in the password and confirm password text boxes. The password in both text boxes must match.

Warning: Do not forget your master password. There is no way to retrieve your password or data once you lose it. If you lose your master password, you must uninstall and re-install the product, losing all data as a result.

Choosing a Good Master Password

It is critical that you choose a good master password. What makes a “good” master password?

- Difficult for someone to guess.
- Easy for you to remember.
- Combinations of letters and numbers or special characters.
- Non-sense words.
- Nothing personal to you.
- Not the same as any account passwords stored in the application.

You should **avoid using the any of the following** for a password, because these are the first things someone trying to break your password will try:

- Your spouse's name.
- Your girlfriend's or boyfriend's name.
- Your child's name.
- Your pet's name.
- Phone numbers.
- Birthdates or anniversary dates.

- Your favorite book, food, hobby, sport, team, or favorite anything.
- Geometric patterns of keystrokes on the keypad.

Some suggestions on how to make up a good password are as follows.

Method 1 – Degrees of Separation – An Advanced Method

This method combines two loosely related words and a related number to form a memorable but difficult to guess password.

For example, start with one word, such as “pen”. Now think of a related word to “pen”, like “ink”. “ink” is too obvious, so we think of a related work to “ink”. A “squid” can have “ink”, so we use this word, since “pen” and “squid” are not an obvious pair at first glance. “Squid” is one degree of separation from “pen”. You can even go another degree of separation, however the password might become difficult to remember.

Now think of a number that is related to “pen” or “squid” such as “8”, since a “squid” (does it?) has eight arms. Combine the parts, to make the final password. In our example, this would be “pen8squid”

Warning: Don't use “pen8squid”, since it is disclosed to the public in this manual.

This method takes a little thought, however it results in a very good password and can be a fun mental game and exercise, as well.

Method 2 – Mixed Cases & Special Characters – A Simple Method

Another method is to use upper and lower case characters or special characters to make the password more difficult to guess. For example, “iCECrEam” is much harder to guess than “icecream” (Note: the “c” and “e” were the only characters uppercased. This makes it is easier to remember which characters you uppercased.).

Method 3 – Password Generator

Use a password generators to create a password for you. Password generators can be found on the internet and are included with some security software packages.

Menu List

The main menu give you option to show a listing of accounts, add a new account or change the application's setup (ex. Change your password.).

Account List

The account list displays the saved account names and user names. Passwords can be viewed by selecting show account from this screen's menu.

Add Account Form

The add account form allows you to create a new account record. You must press the “SAVE” soft-button or the new account will not be created. Hitting the “BACK” soft-button will discard any changes made in the form.

Edit Account Form

The edit account form allows you to edit an existing account record. You must press the “SAVE” soft-button or changes will be lost. Hitting the “BACK” soft-button will discard any changes made in the form.

Show Account From

The show account form allows you to view an existing account record. Your account password will be displayed on this form. The master password is never displayed.

Troubleshooting

The table below lists problems and possible solutions.

<i>Problem</i>	<i>Possible Solution</i>
I can't setup the master password. I keep getting message “passwords do not match”.	You must key in the password twice before attempting to save the password.. Once in the “password” text field and a second time in the “confirm password” text field (scroll down using the down key to see this field). After you have filled in both text boxes with the same password, then hit the save key.
I get the message “out of storage space”, when I try to add a new account.	Your mobile device has limited storage capacity. To add more account information try one of the following solutions: <ul style="list-style-type: none"> · Delete un-needed accounts from the PassStore application. · Delete un-needed data from another application. · Remove an un-needed application. · Upgrade your mobile device to another device with larger storage capacity (contact your mobile service provider for assistance).

<i>Problem</i>	<i>Possible Solution</i>
I accidentally uninstalled the PassStore application.	Please contact your mobile service provider to obtain a new copy of the software. All data is lost on uninstall and must be re-entered.
I forgot my master password.	You must uninstall and reinstall the application. Warning: ALL account information will be permanently deleted (destroyed). You must re-entered the account data after setting up a new master password.
I can't see all of my accounts in the account list.	If you have saved several accounts there may be too many to display at one time on your mobile device's screen. You must use the down arrow key (This is specific to your mobile device, so see your mobile device's manual for information on this key.) to scroll the display and see additional account information.
My account password does not display in the account list.	For security reasons, the password will only display in the show account screen. This is to help prevent someone near you from seeing all of your passwords.

Technical Support

Before contacting technical support please read the “Troubleshooting” section. If after reading this section you are still having trouble, please contact technical support at one of the following contacts points:

Clarisource, Inc.

Email: Inquire@clarisource.com

Web: <http://www.clarisource.com>

Feedback

Clarisource is always happy and eager to hear customer feedback about our products and ideas for new products you'd like to see. Please feel free to contact us at any time with your comments or suggestions.

Email: Inquire@clarisource.com

Web: <http://www.clarisource.com>